

Directions for Playing Game of Words

(Lion Coffee game premium by Woolson Spice Company)

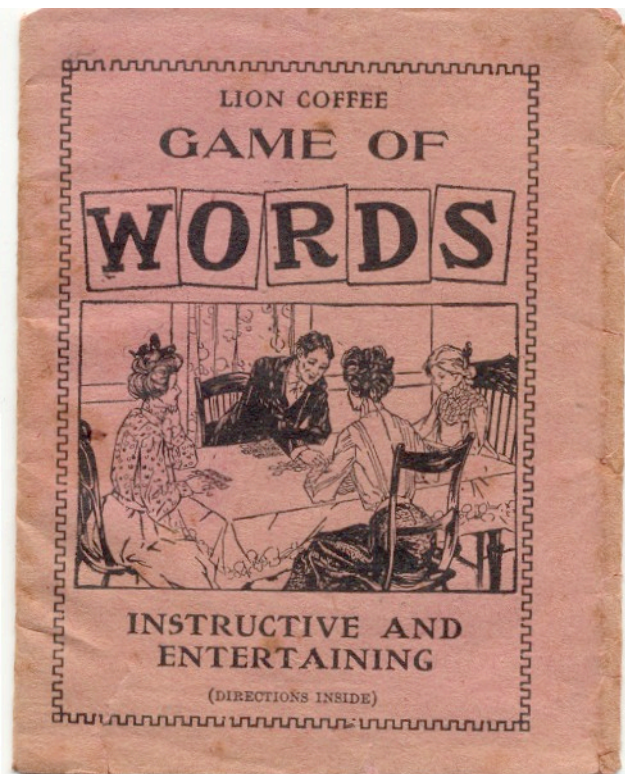
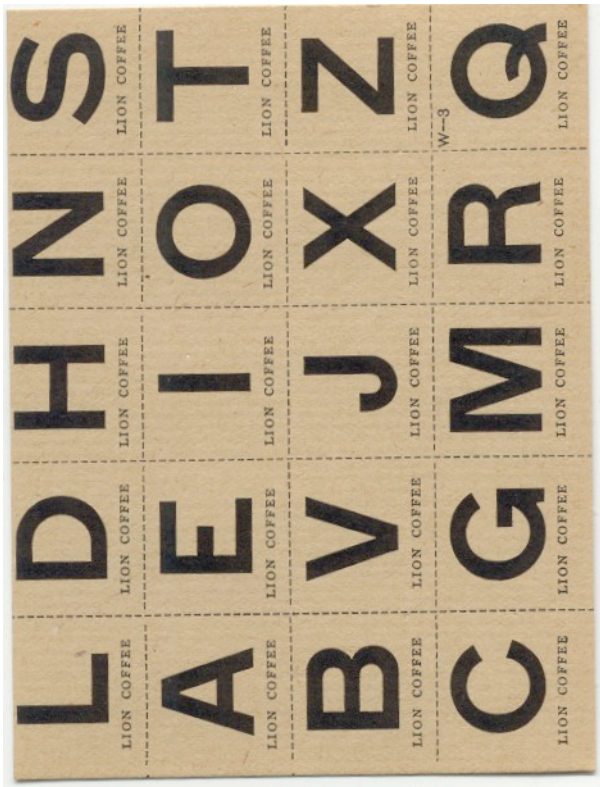
Two or more may play at a table, and the game can be made progressive - using two or more tables if desired. Put the pile of letters in center of table - each player drawing five or six. When each has made as many words as possible from his own pile, one player starting, draws a letter from the center, and tries to make a new word, combining the new letter with his unused letters. Failing in this, or if successful, he looks around the board and if he can make over any of his opponents' words to form a new one (plurals not counted) using all the letters in the opponent's word and any of his extra letters, he may add the new word to his own list.

Each one draws and plays in turn, and when all the letters in the pool are gone, the player having the greatest number of words wins.

The game may be played with partners if desired.

Game of Syllabus

Each player is given thirty letters, the remaining letters to be left, face downward at one side of the table, and called "The Pile." First player lays down a word of one syllable, formed from the letters given him. Next player to left, if possible, completes the word by adding a syllable, and so on around the table once. The player who added last syllable wins that word, then lays down another word (same as first player before), and the play goes around again. Any player unable to form a word (not a syllable) from letters given him may draw one letter from "The Pile." The count shall be kept by means of "counters" (matches or Lion Coffee beans are the best), the play who wins a word taking as many counters as there are syllables in his word. When "The Pile" is exhausted and no player can form another word, the player having the most counters wins the game..



Card sheet front (*the back is plain*)

Game cover

The game consists of a paper cover open at the top and bottom, a sheet of instructions the size of a game card uncut, and 12 cards each containing 20 playing pieces to be cut from the card. The uncut cards have identifying numbers of W-1 to W-7, and there are 6 W-1 cards, and one each of the rest of the cards. The W-1 card has the most common letters, and are thus repeated. This creates a total of 72 playing pieces once cut up. Each playing piece is a letter of the alphabet.

Though the cover only mentions the Game of Words, instructions are included for playing the Game of Syllabus as well on the back of the instruction sheet (the front has the rules for the Game of Words.)